



Measure A & B
Santa Cruz City Schools Campus Updates

Bay View Elementary

MADI
ARCHITECTS + PLANNERS

NOVEMBER 5, 2018



- △ BOND MASTER PLAN
- △ PLAYGROUND
- △ DROPS GRANT
- △ UTILIZATION
- △ MASTER PLAN
- △ NEW CLASSROOMS
- △ CLASSROOM MODERNIZATION STANDARDS
- △ BUDGET UPDATE





Measure



Projects

YOUR BOND DOLLARS AT WORK



Projects

- Existing Building Modernization
- New Classroom Building
- Landscape Improvements
- Move WPENS Classroom
- New Kindergarten Building
- Improve Heating/ Cooling
- Utility Infrastructure
- New Multipurpose Building
- New Playground Surfacing
- Parking Expansion

Status

- Design
- Design
- Design
- Design
- Design
- Design
- Design
- Design
- Design
- Design

Site Map



- 01 Front Landscape
- 02 Classroom Building
- 03 Classroom Building
- 04 Classroom Building
- 05 Classroom Building
- 06 Classroom Building
- 07 New Classroom Building
- 08 WPEN Classrooms
- 09 Playground
- 10 Portable Classrooms
- 11 Play Fields
- 12 Parking

■ Completed
 ■ Construction
 ■ Design



BAY VIEW ELEMENTARY SCHOOL

SANTA CRUZ CITY SCHOOLS THANKS YOU FOR YOUR SUPPORT!



www.sccs.net

WWW.MADI-ARCH.COM





Stakeholder meetings

User Group	Date
Site Plan Meeting - Staff meeting	5/22/2017
DROPS meeting with Principal (Yvette Garcia)	11/15/2017
Principal (Yvette Garcia)	12/14/2017
Teachers & Staff	1/24/2018
PTO Meeting	1/25/2018
PTO	2/1/2018
Librarian	2/7/2018
Staff Meeting	2/28/2018
Special Education Walk Through w/Principal	3/21/2018
WPENS Meeting	3/27/2018
Site Council Meeting	5/17/2018
Principal Meeting	6/12/2018
Principal Meeting	9/27/2018

Project Name	Date	Project Milestone
WPENS Relocation (including parking lot)	5/10/2018	DSA Approval
New Kindergarten Bldg	8/1/2018	Estimated DSA Submittal
New Classroom Building	6/15/2018	Estimated DSA Submittal

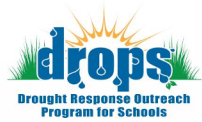




New playground resurfacing, completed August 2018

Stakeholder Meetings to review project status





Drought Response Outreach Program for Schools (DROPS) is focused on projects that reduce stormwater pollution and provide multiple benefits including water conservation, water supply augmentation, energy savings increased awareness of water resource sustainability, and reduced dry weather runoff.



BAYVIEW ELEMENTARY SCHOOL

Drought Response Outreach Program for Schools



FLINT

MADI
ARCHITECTS + PLANNERS



DOUG GAMMELGARD
Superintendent



LLB CONTRACTOR

A Better Building...A Better Building Experience!





ROOM #	GRADE	TEACHER	NOTES
1	Staff Rooms		Used as Meeting, Conference Room, Staff rm
2		Marvyn/Walk to Read	
3		Marvyn/Walk to Read	
4	1st	Sonia Banuelos	
5	1st	Kathy Mitchell	
6	1st	Laura Moore	
7	1st	Caroline Sammet	
8	Comp Lab		Connected to Library
9	K	Eva Quivredo	
10	K	Leigh Min	
11	2nd	Crissy Hansen	
12	Sp. Ed/ASES	Israel Vega/ASES	During School: Special Ed. After School: ASES
14	2nd	Margaret LaMotta	
15	2nd	Ricki Traylor	
16	2nd/3rd	Karin Macommons	
17	2nd	Berry Valles	
18	2nd	Melayne Ballaban	
19	Preschool	Malissa Serrano	Special Education Pre-school
21	RSP	Lisa Franklin & Alice Cato	Psychologist (Rachel Kieffer & Vanessa Ragan) & Speech west door
22	Title 1	Charlene Oatley	Response/Title 1
23	Music	Karina Hargre	Part Time
24	4th/5th	Julia Roth	
25	4th	Chad Smith	
26	5th	Stu Branoff	
27	Life Lab	Jessica Parvak	
28	4th	Jennifer Johnston	
29	4th	Ariana Salinas	
30	4th	Barbara Newell	
31	SOC-ED	Megan Lyons	Intermediate (4th/5th)
33	SCD-ED	Linda Baker	Special Ed (2nd/3rd)
K-1	K	Candice Cole	
K-2	K/K	Adriana Escaraga	Transitional Kindergarten/Kindergarten
Lab 1	Sp. Ed		Special Education/Library
Lab 2	Sp. Ed		Special Education/Library
WHITES			Meeting & Afternoon Classes
A		Pre-School	
B		Office/Attendance/Secretary	Office
C		Principal's Office	Office
D		School Generator	Office
E		Community Coordinator	Office
F		Nurse	Office
G		Custodial Storage	
H		Staff Room	MJ
I		Scrap/Copy Room	Library
J		Library Storage	Library
K		Custodial Storage	
L		Room K-1 Storage	
M		Room K-2 Storage	
N		Room K-3 Storage	
O		CCC	Before and After School Care
P		April Porterfield & Kathy Isom	Library



1 SITE PLAN SCALE: 1"=30'-0"



ARCHITECT
MADI
ARCHITECTURE + PLANNING
303 POTRERO STREET, SUITE 5
SANTA CRUZ, CA 95060
TEL: 800.777.4057

BAY VIEW ELEMENTARY SCHOOL

CAMPUS CONCEPTUAL PHASING PLAN
UTILIZATION

AS-BUILT

© 2018



SCHOOL DISTRICT



ARCHITECT
MADI
ARCHITECTURE + PLANNING
303 POTRERO STREET, SUITE 5
SANTA CRUZ, CA 95060
TEL: 800.725.0571

BAY VIEW ELEMENTARY SCHOOL

1231 BAY STREET, SANTA CRUZ, CA 95060

© 2018

CAMPUS MASTER & PHASING PLAN

DATE: AUGUST 2018
DRAFT



BUDGETS & TIMELINES:

Bay View Elem. Measure B Bond-Budget:	Start	Start	Complete	\$13,961,998
				Project Budget
Multi Project Overhead	7-Nov-16	7-Nov-16	7-Nov-21	\$698,100.00
Re-roofing (complete)				\$918,662.00
New WPENS Portable & Site Work				
New Kindergarten Bldg. & Site Work	8-Jan-18	10-Jun-19	9/31/2019	\$1,587,407.94
New Classroom Bldg. and Site Work	8-Jan-18	1-Oct-18	23-Aug-19	\$2,598,727.14
Modernization Phase 1	7-Feb-18	10-Jun-19	31-Dec-19	\$3,416,000.00
Modernization Phase 2	12-Jun-18	1-Jan-20	21-Aug-20	\$3,050,000.00
Portable Demolition & Site Work	12-Jun-18	15-Jun-20	23-Aug-20	\$732,000.00
Card Infrastructure Improvements	12-Jun-18	10-Jun-19	21-Aug-20	\$120,000.00
Exterior Site Security (Fencing)	12-Jun-18	10-Jun-19	21-Aug-20	\$300,000.00
Fire Line	8-Jan-18	10-Jun-19	24-Aug-19	\$488,000.00
				\$13,908,897.08

CLASSROOM MODERNIZATION

- NEW FINISHES,
- HVAC (+COOLING),
- DUAL PANE WINDOWS,
- FIRE ALARM,
- DATA,
- TV
- ADA UPGRADES
- OTHER...

SIX NEW CLASSROOMS & PARKING LOT

NEW CLASSROOMS

NEW FIRE LINE AND HYDRANT

PLAYGROUND IMPROVEMENTS

PLAYGROUND RESURFACING

MODERNIZATION

BLACKTOP EXPANSION FOR BASKETBALL

PORTABLES TO REMAIN AS INTERIM HOUSING

FIELD (FUTURE BOND)



MODERNIZATION PHASE 1B (FALL 2019)

MODERNIZATION PHASE 1A (SUMMER 2019)

MODERNIZATION PHASE 2B (SUMMER/FALL 2020)

MODERNIZATION PHASE 2A (SUMMER 2020)

NEW KINDERGARTEN & SITE WORK (IF BUDGET ALLOWS)

WPENS (NON-BOND)



MADI
ARCHITECTURE

BAY VIEW ELEMENTARY SCHOOL

MODERNIZATION

SEPTEMBER, 2018





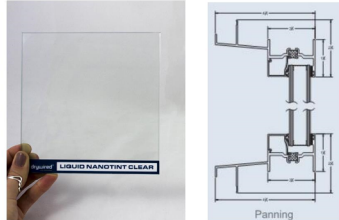


MADI

ARCHITECTS + PLANNERS



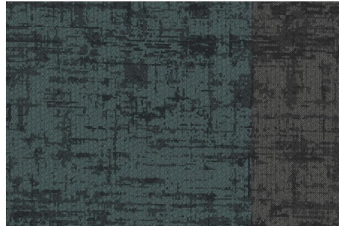
ELECTRONIC LOCKS



WINDOW FILM / NEW WINDOWS



ROLLER BLINDS



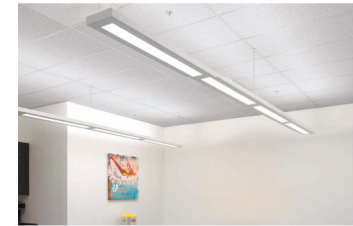
CARPET



16" MIN. MAGNETIC WHITE BOARD WIDTH

OPTIONAL DROPDOWN SCREEN
HIGH DEFINITION TELEVISION ON AN ADJUSTABLE MOUNT

TYPICAL EXISTING CLASSROOM: CUT-AWAY SECTIONAL VIEW



LINEAR PENDANT LIGHTING



CEILING FAN



DUCTSOX & CORE

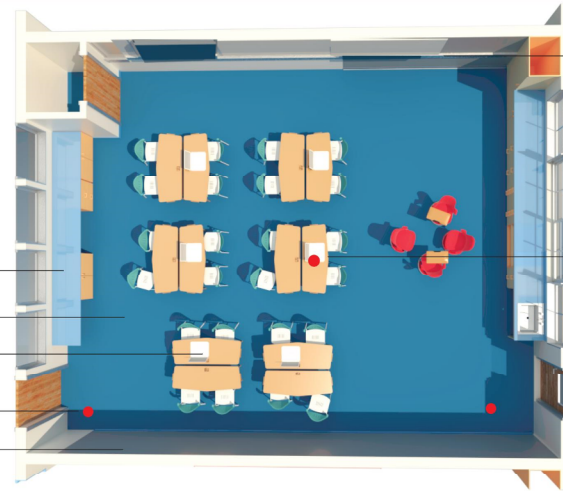
DUCTSOX FABRIC DUCT

NEW CARPET

NEW FURNITURE (TO BE SELECTED)

SOUND AMPLIFICATION (OPTIONAL CONSIDERATION)

NEW TACKBOARD



ELECTRIC/DATA WIREMOLD (WHERE REQUIRED)

WIRELESS ACCESS POINT IN CEILING (WAP)

ELECTRONIC LOCKS WITH REMOTE STAFF READER

TYPICAL EXISTING CLASSROOM: CUT-AWAY PLAN VIEW



ADJUSTABLE TV MOUNT



WIREMOLD

INTERIOR SAMPLE BOARD



MADI
ARCHITECTURE

BAY VIEW ELEMENTARY SCHOOL

MODERNIZATION

SEPTEMBER, 2018



BUDGETS & TIMELINES:

Bay View Elem. Measure B Bond-Budget:	Start	Start	Complete	\$13,961,998
				Project Budget
Multi Project Overhead	7-Nov-16	7-Nov-16	7-Nov-21	\$698,100.00
Re-roofing (complete)				\$918,662.00
New WPENS Portable & Site Work				
New Kindergarten Bldg. & Site Work	8-Jan-18	10-Jun-19	9/31/2019	\$1,587,407.94
New Classroom Bldg. and Site Work	8-Jan-18	1-Oct-18	23-Aug-19	\$2,598,727.14
Modernization Phase 1	7-Feb-18	10-Jun-19	31-Dec-19	\$3,416,000.00
Modernization Phase 2	12-Jun-18	1-Jan-20	21-Aug-20	\$3,050,000.00
Portable Demolition & Site Work	12-Jun-18	15-Jun-20	23-Aug-20	\$732,000.00
Card Infrastructure Improvements	12-Jun-18	10-Jun-19	21-Aug-20	\$120,000.00
Exterior Site Security (Fencing)	12-Jun-18	10-Jun-19	21-Aug-20	\$300,000.00
Fire Line	8-Jan-18	10-Jun-19	24-Aug-19	\$488,000.00
				\$13,908,897.08



BUDGETED COSTS